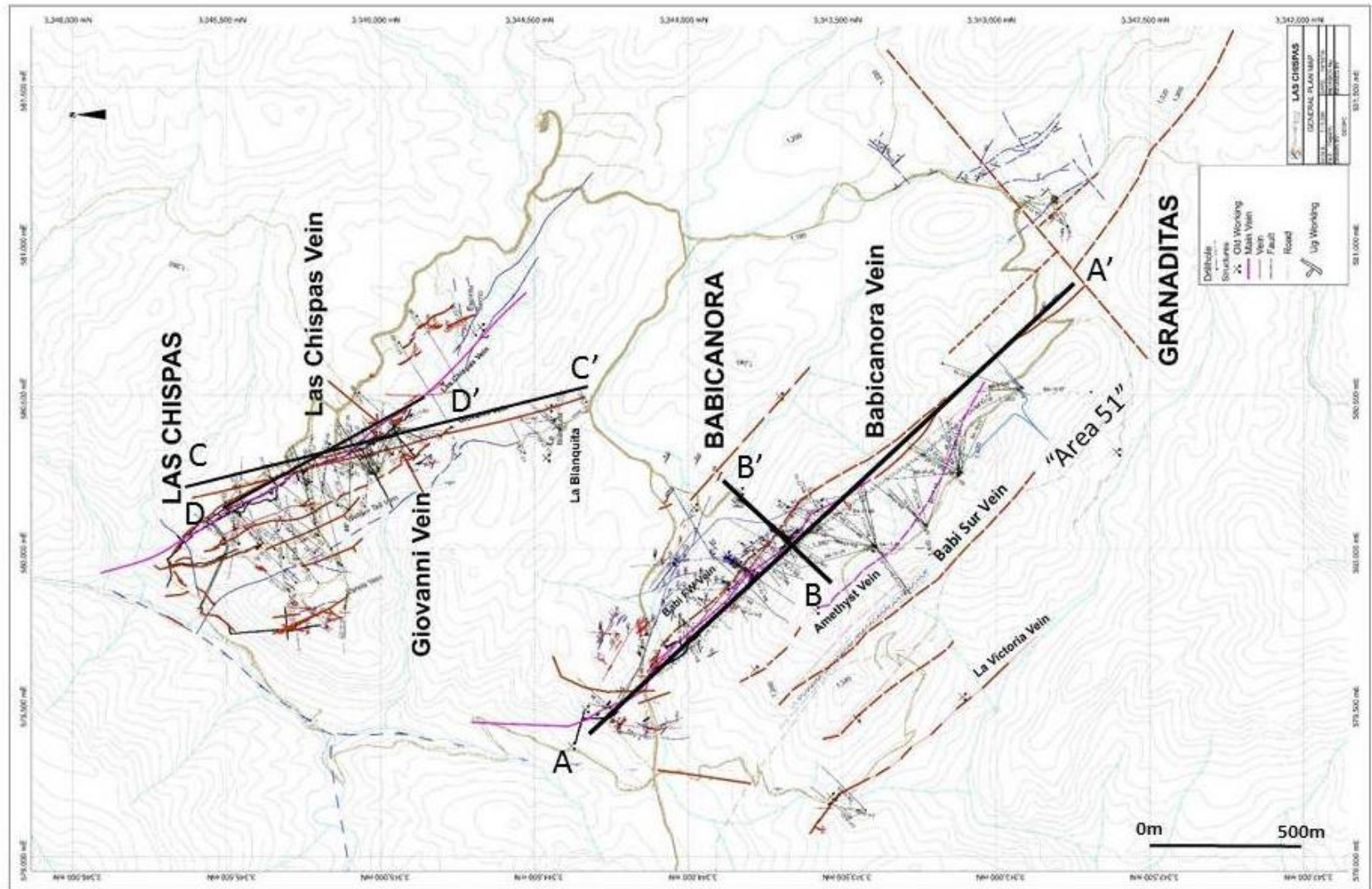
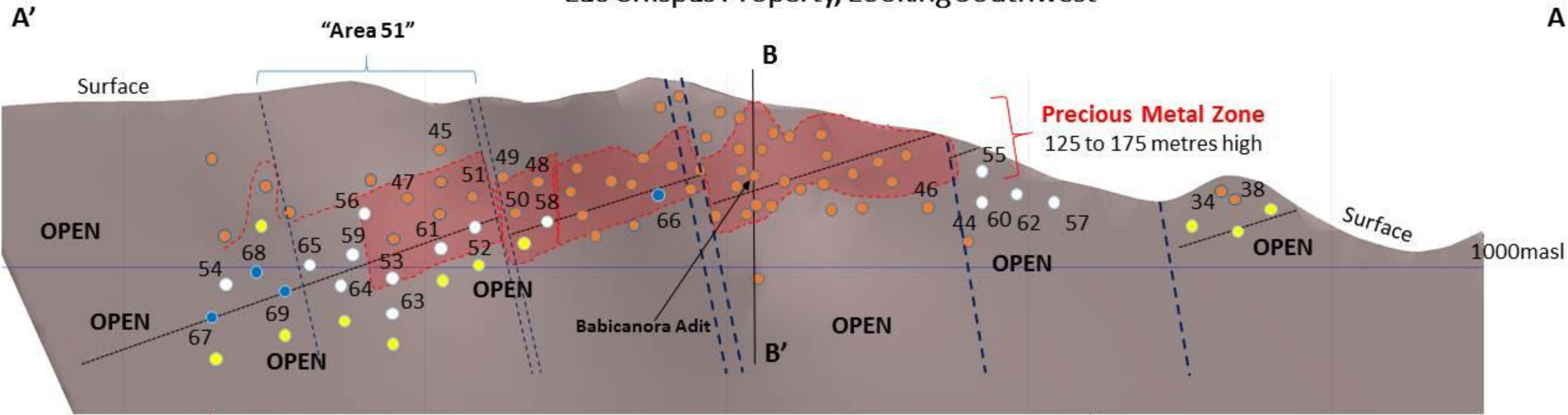


## Las Chispas Property – Plan Map

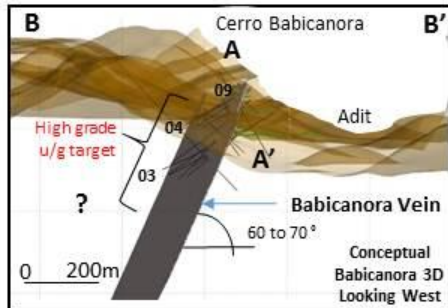


### Long Section (Inclined) of Babicanora Vein Las Chispas Property, Looking Southwest



Est. 1,500m – Partially Drill-Tested as of Dec. 27, 2017

Initially Drill-Tested Target by Jan 2018 – est. 2,000m strike length









All information is approximate

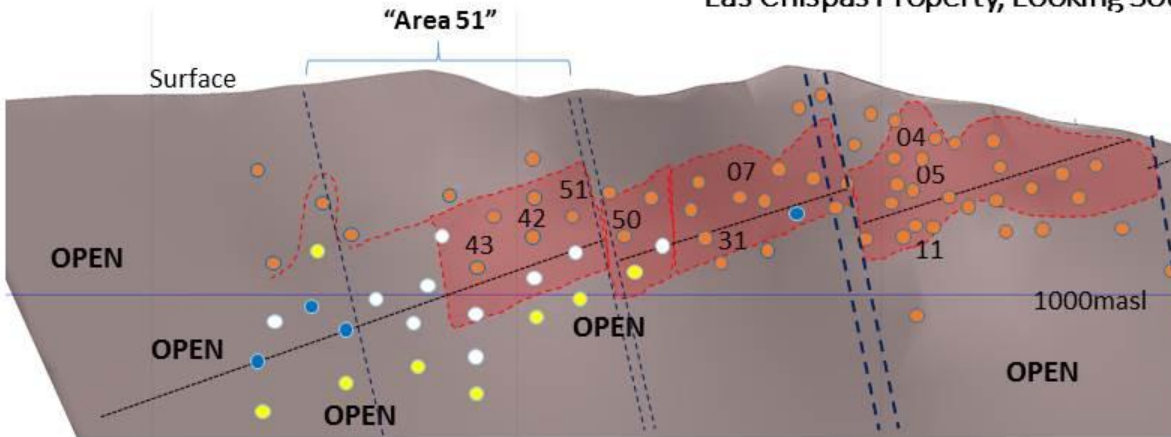


BA17-51: 3.1m grading 40.45 gpt Au, 5375.2 gpt Ag, 8409 gpt AgEq\*

**Legend**

-  Historic U/G Workings
-  Currently Drilling, 1/20/18
-  Proposed Drill Holes
-  Assays Pending
-  Completed DH Pierce pt.
-  High-grade Footprint, 12/27

**Long Section (Inclined) of Babicanora Vein & Rep High Grade Photos**  
Las Chispas Property, Looking Southwest



BA17-04; 6.6m @  
1.03 gpt Au, 328.5 gpt Ag,  
406 gpt AgEq



UB17-05; 6.1m @  
4.84 gpt Au, 383 gpt Ag,  
746 gpt AgEq



UB17-11; 3.7m @  
2.58 gpt Au, 332.6 gpt Ag,  
526 gpt AgEq

0m 300m



BA17-42: 2.2m grading 3.79 gpt Au,  
388.1 gpt Ag, 673 gpt AgEq\*



BA17-51: 3.1m grading 40.45 gpt Au,  
5375.2 gpt Ag, 8409 gpt AgEq\*



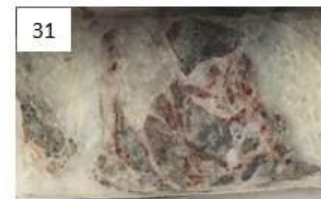
BA17-07: 4.8m grading 4.63 gpt Au,  
250.9 gpt Ag, 598 gpt AgEq\*



BA17-43: 3.2m grading 26.95 gpt Au,  
1,493.6 gpt Ag, 3515 gpt AgEq\*









BA17-50: 5.0m grading 1.95 gpt Au,  
265.2 gpt Ag, 411 gpt AgEq\*



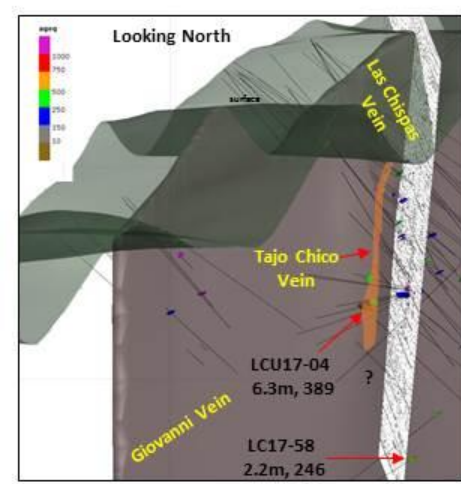
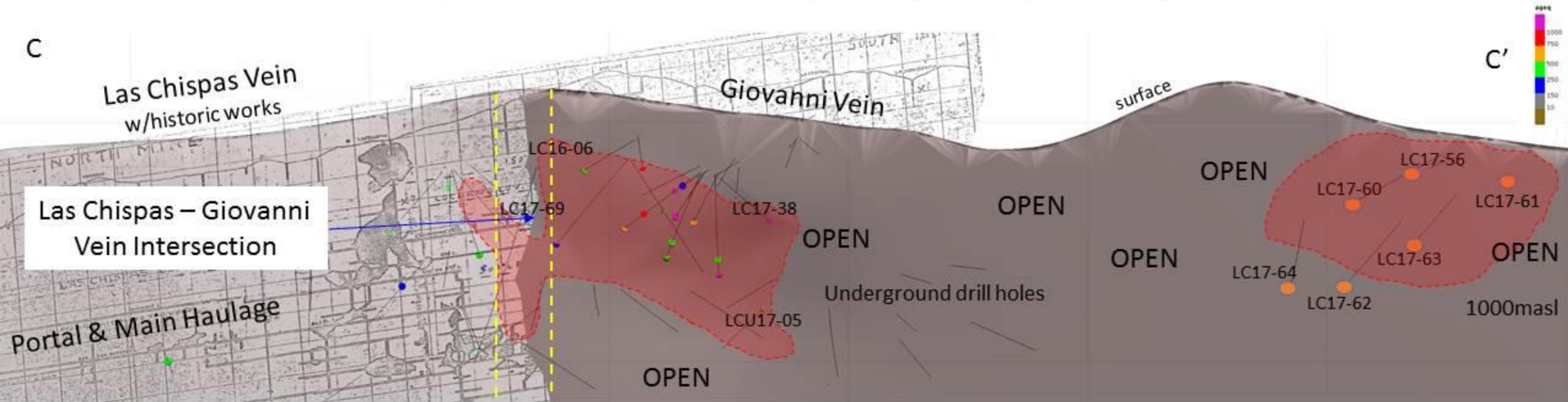
BA17-31: 3.8m grading 5.65 gpt Au,  
451.5 gpt Ag, 875 gpt AgEq\*

**Legend**

-  Historic U/G Workings
-  Currently Drilling 1/20/18
-  Proposed Drill Holes
-  Assays Pending
-  Completed DH Pierce pt.
-  High-grade Footprint, 12/27

Notes: all information is approximate;  
AgEq based on 75 (Ag):1 (Au) and 100%  
metallurgical recovery.

Vertical Long Section of Giovanni & Las Chispas Veins, Las Chispas Property Looking East



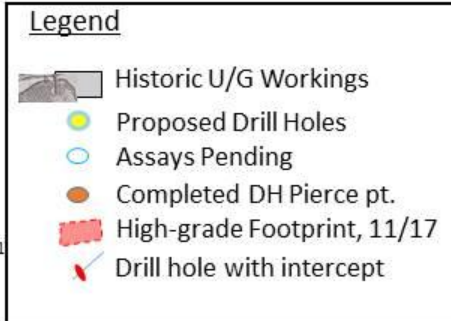
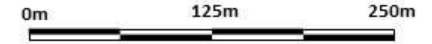
Est. 250m – Drill-Tested as of Nov. 28, 2017

Est. 1,000m strike length

LC17-69: 1.6m grading 1.95 gpt Au, 252.0 gpt Ag, 398 gpt AgEq\*

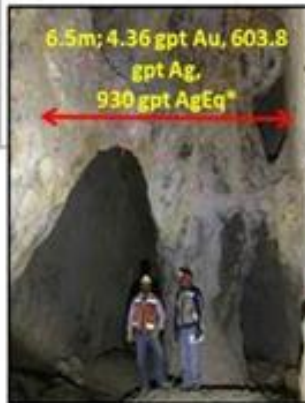
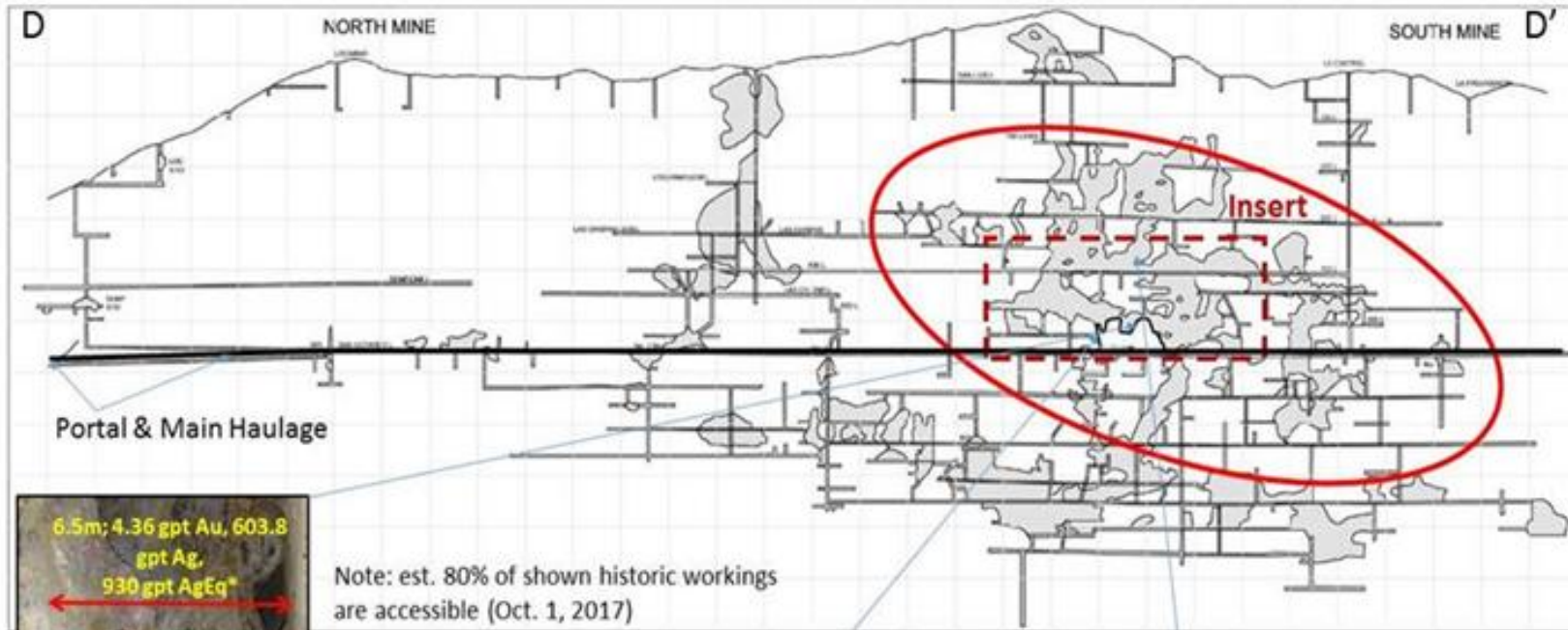


Notes: all information is approx.; \*AgEq based on 75 (Ag):1 (Au) and 100% metallurgical recovery.



## Las Chispas Vein – Recent Sampling Results

Las Chispas Mine & Vein Long Section With Historic Workings (Looking Northeast)



Note: est. 80% of shown historic workings are accessible (Oct. 1, 2017)



-  Resource Target Area, U/G sampling & drilling
-  Historic Workings Pre-1930
-  Unmined

\*75 (Ag) : 1 (Au) ratio for AgEq



0m  300m