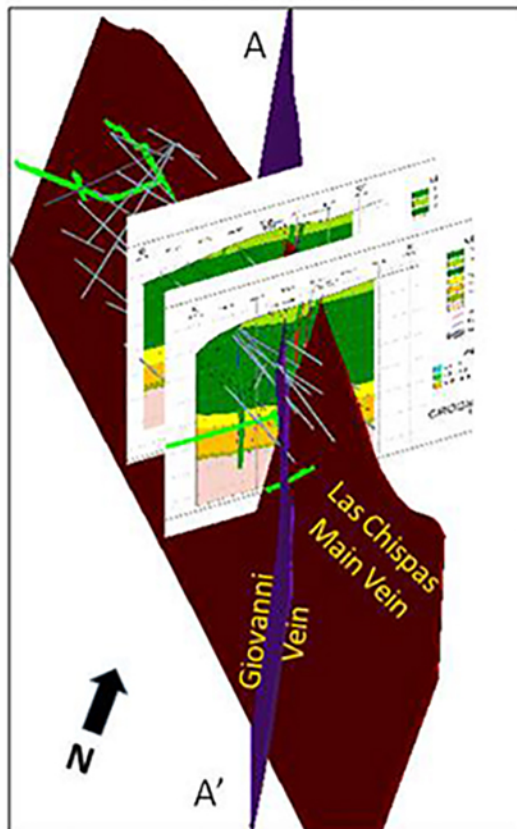
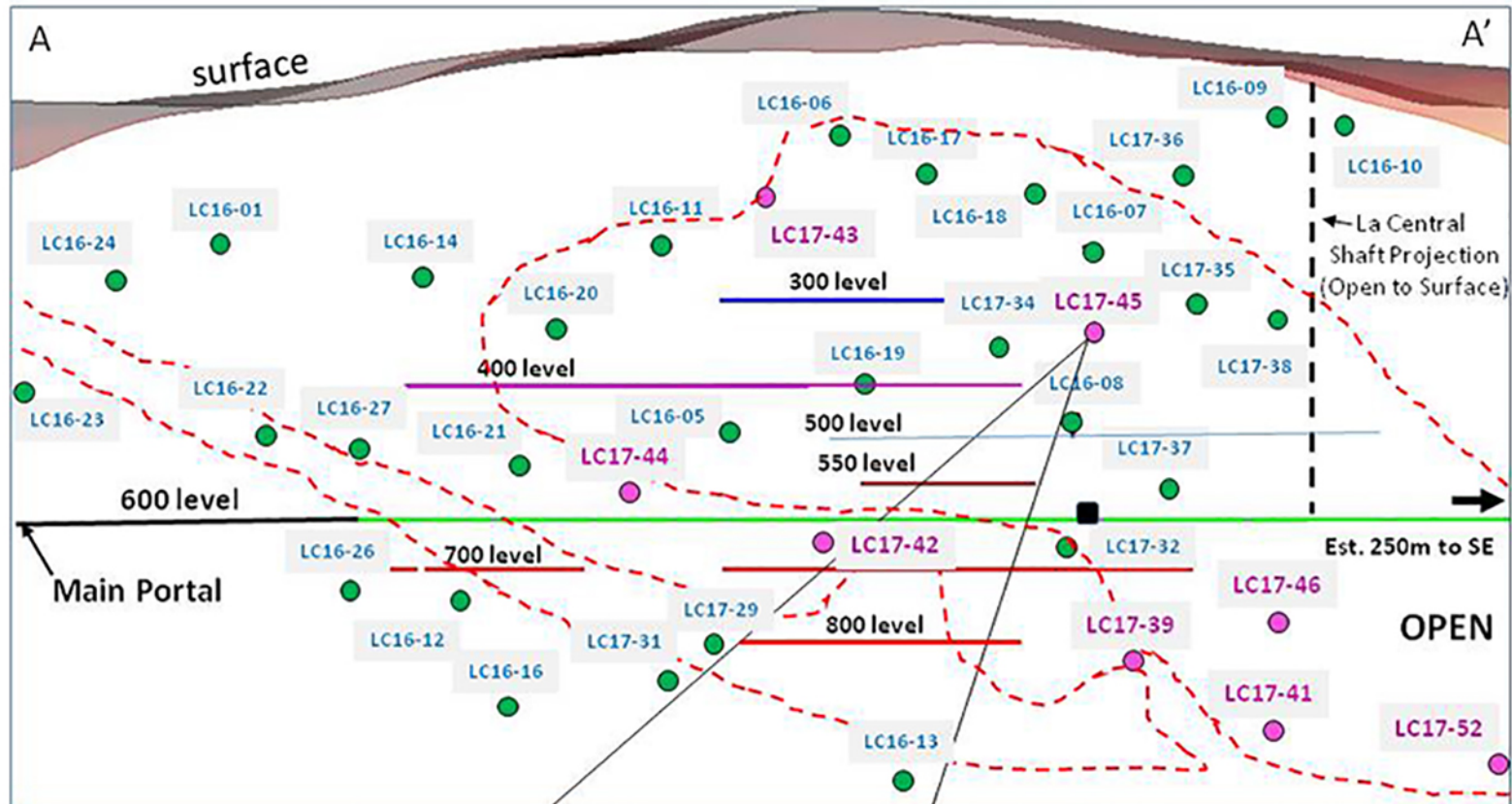


3D View w/X Sections



Giovanni/Las Chispas Veins Long Section (Looking East)



- Hole ID Giovanni & Las Chispas Vein hole pierce point (est.)
- Hole ID Phase II hole pierce point in this news release
- Grade Contour @ > 250 gpt AgEq
- Drill Hole Trace
- Accessible Underground levels & portal

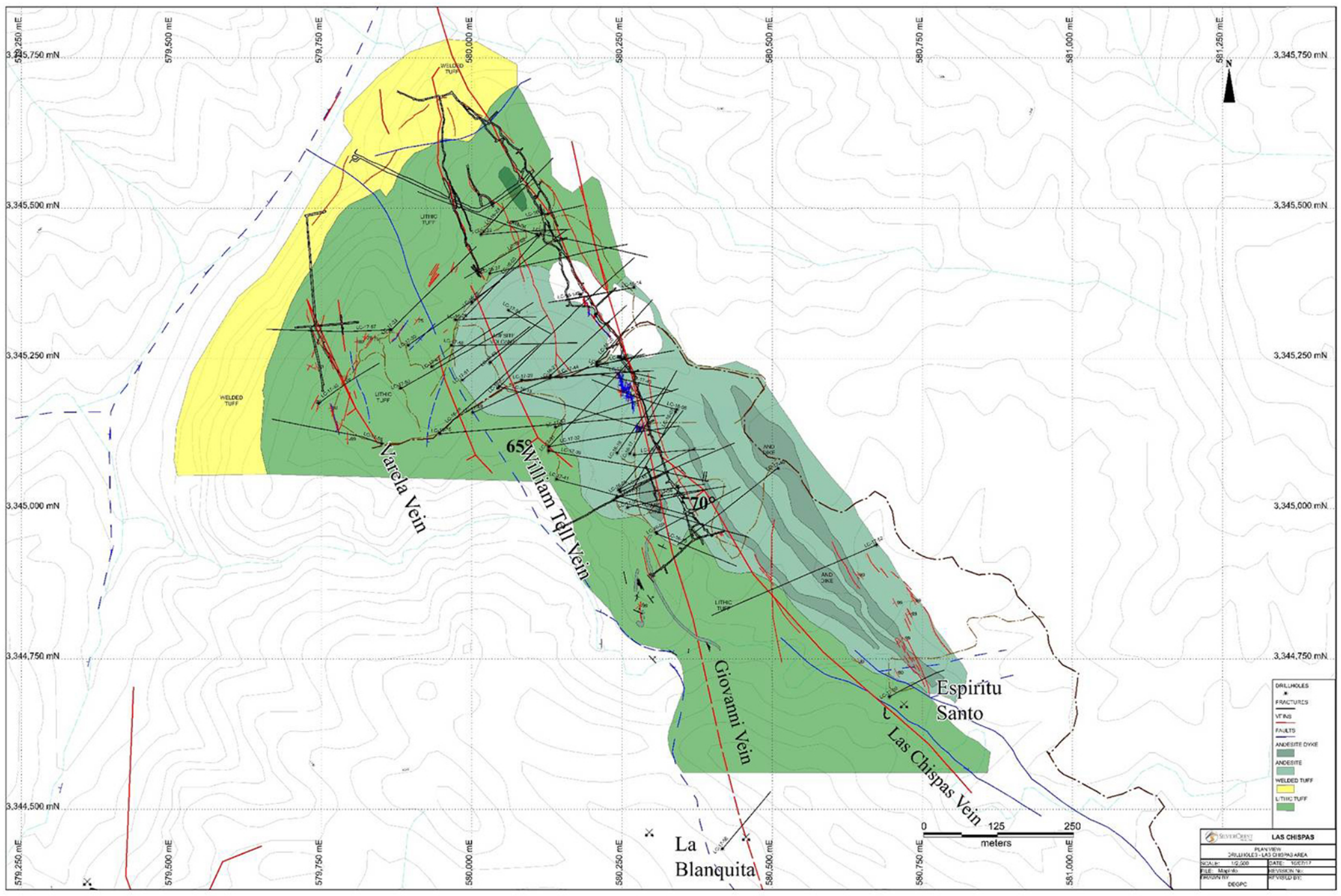


Hole LC17-45; 1.9m @ 8,803 gpt AgEq*



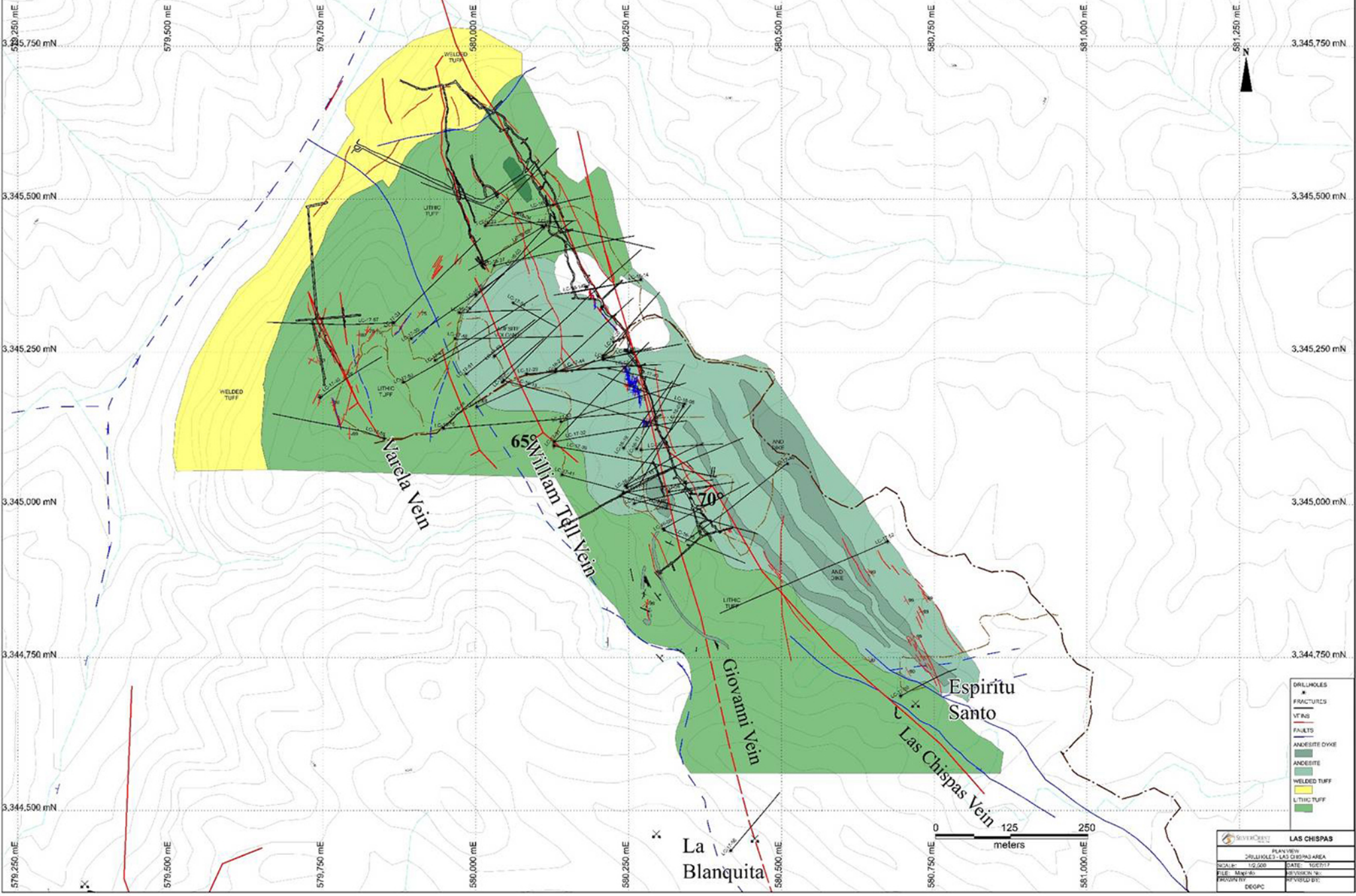
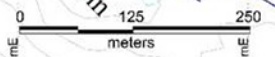
0m 100m

*75 (Ag):1 (Au) ratio for AgEq



- DRILLHOLES *
- FRACTURES —
- VFAS —
- FAULTS —
- ANKERITE DYKE —
- ANKERITE —
- WELDED TUFF —
- LITHIC TUFF —

LAS CHISPAS	
PLAN VIEW	DRIILHOLES-LAS CHISPAS AREA
SCALE: 1/2,000	DATE: 10/27/17
FILE: Mxp-01	REVISION: 1
PROPERTY: EGPC	REVISOR: []



Varela Vein

65° William Tell Vein

Giovanni Vein

Las Chispas Vein

Espiritu Santo

La Blanquita

70°

WELDED TUFF

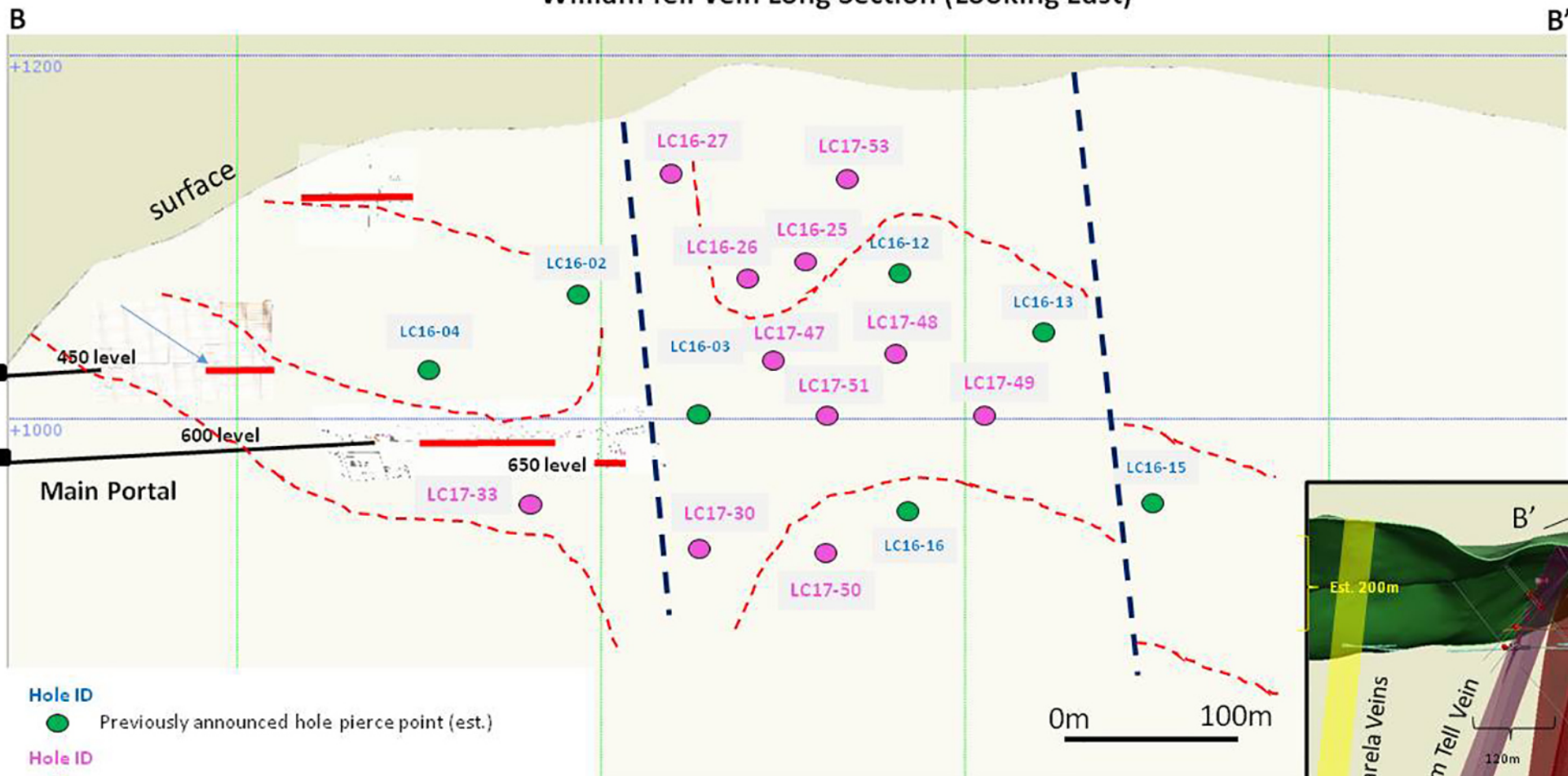
LITHIC TUFF

LITHIC TUFF

LITHIC TUFF

AND DIKE

William Tell Vein Long Section (Looking East)



- Hole ID**
- Previously announced hole pierce point (est.)
- Phase II hole pierce point in this news release (est.)
- - - Grade Contour @ > 250 gpt AgEq*
- Previously reported high grade U/G channel samples



* 75 (Ag):1 (Au) ratio for AgEq

