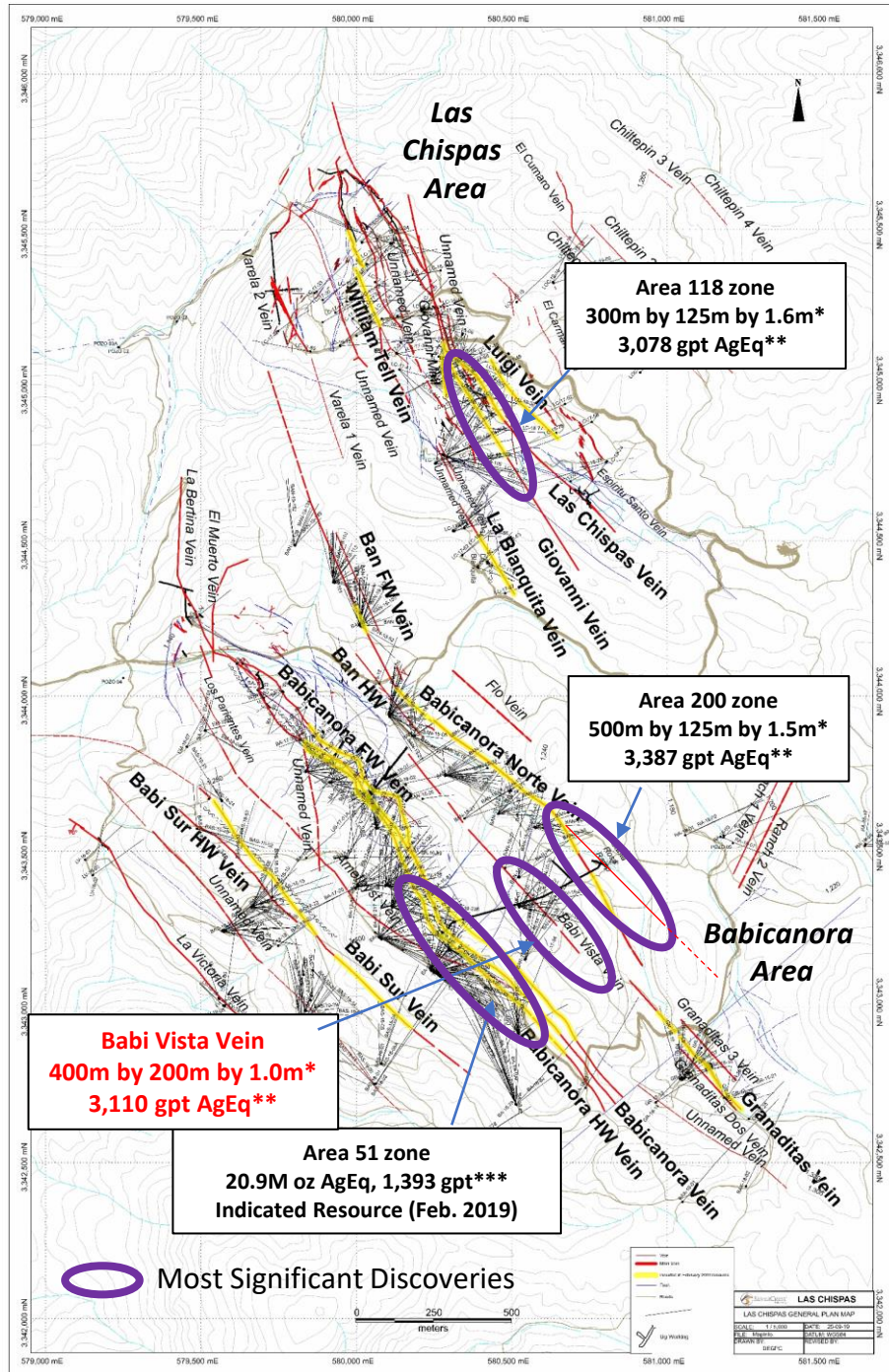
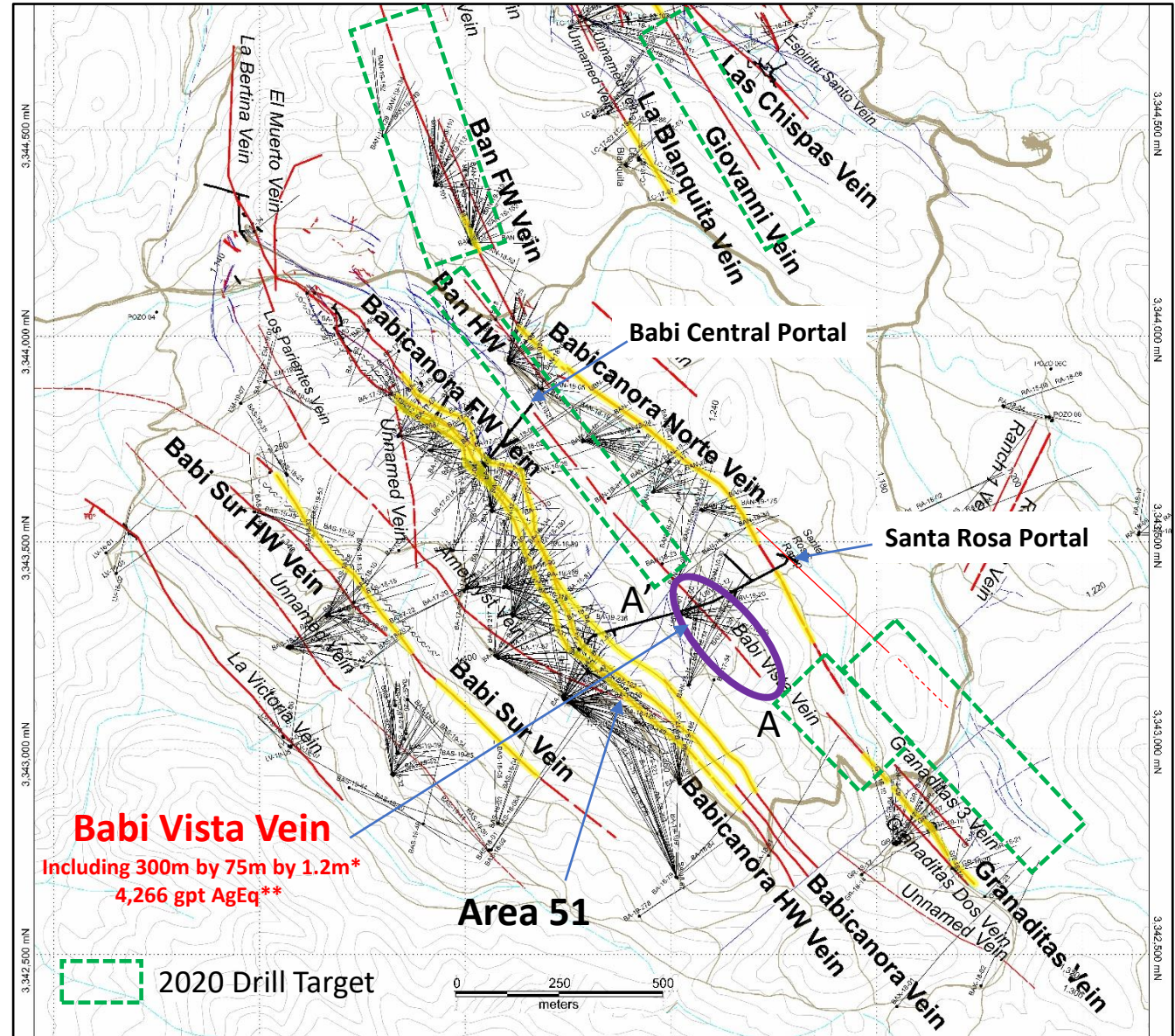


Las Chispas District Plan Map



Babicanora Area Plan Map - May 2020

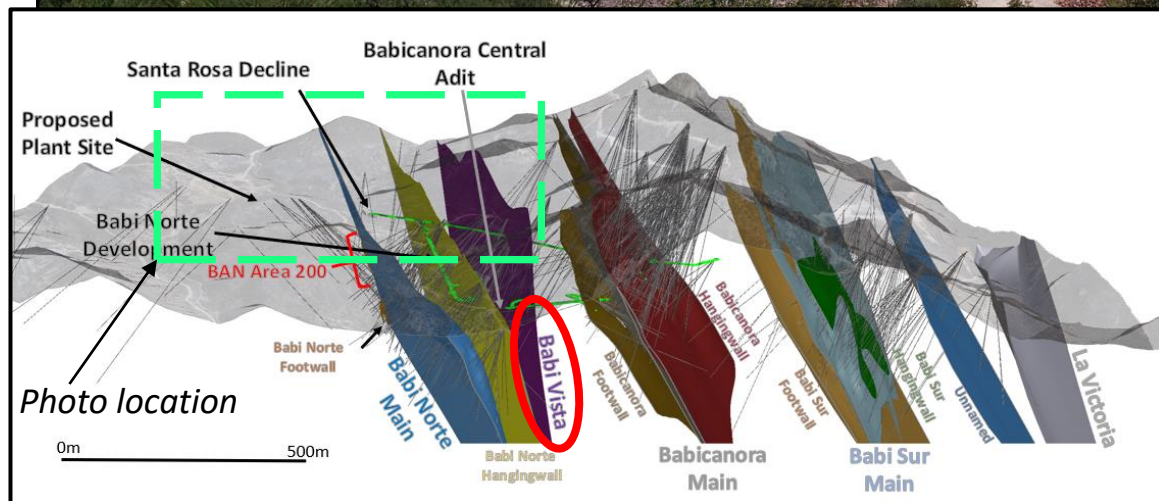


*High-grade footprint, vein strike length by height by est. true width, uncut/undiluted as of May 11, 2020.

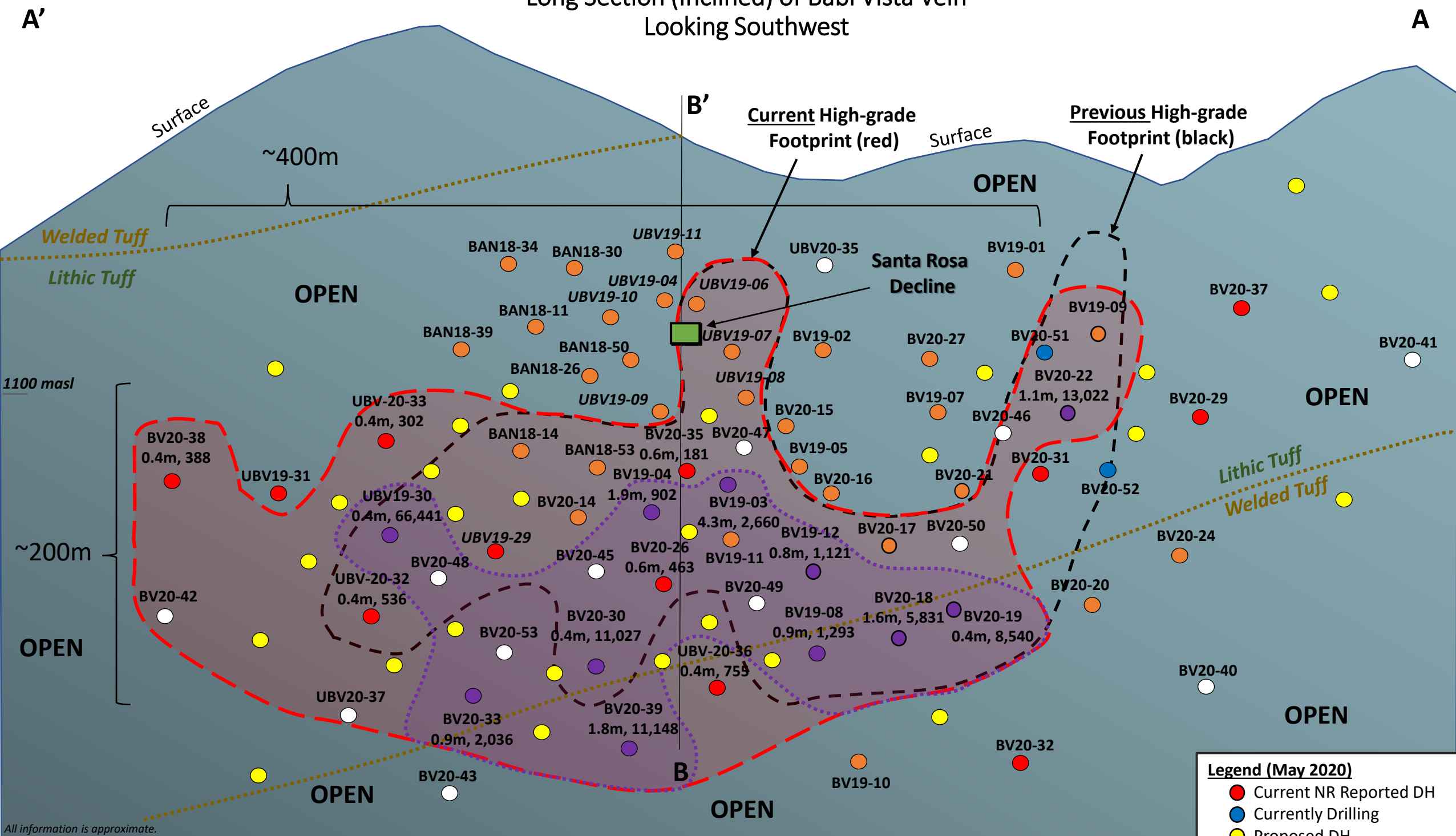
**AgEq based on 75 (Ag):1 (Au) calculated using long-term silver and gold prices of US\$17.00 per ounce silver and US\$1,225 per ounce gold, with average metallurgical recoveries of 90% silver and 95% gold.

***Indicated Resource of 466,000 tonnes, grading 7.90 gpt Au and 801 gpt Ag. Refer to Table 1-4 of the PEA.

Babicanora Area, Looking Southeast



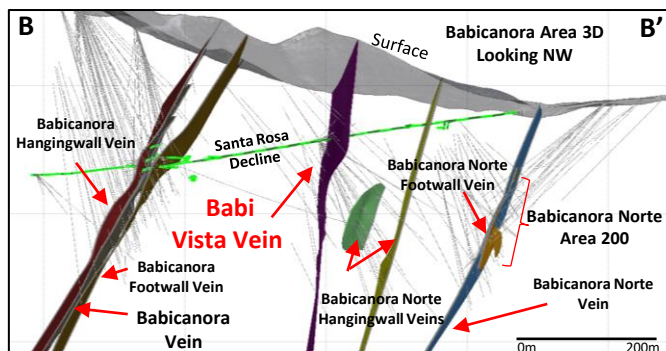
Long Section (Inclined) of Babi Vista Vein Looking Southwest



All information is approximate.

Legend (May 2020)

- Current NR Reported DH
- Currently Drilling
- Proposed DH
- Assays Pending
- Completed DH Pierce pt.
- >1000 gpt AgEq, NR & Total
- ⊗ >1000 gpt Footprint
- High-Grade Footprint
- Previous H-G Footprint
- Underground Workings
- BV-03
8.8m, 1134 Drill hole #
- True Thickness, gpt AgEq*



BV20-39: 1.8m @ 78.83 gpt Au and 5,235.4 gpt Ag, or 11,148 gpt AgEq*

*AgEq based on 75 (Ag):1 (Au) calculated using long-term silver and gold prices of US\$17.00 per ounce silver and US\$1,225 per ounce gold, with average metallurgical recoveries of 90% silver and 95% gold.
Note: NR = this news release