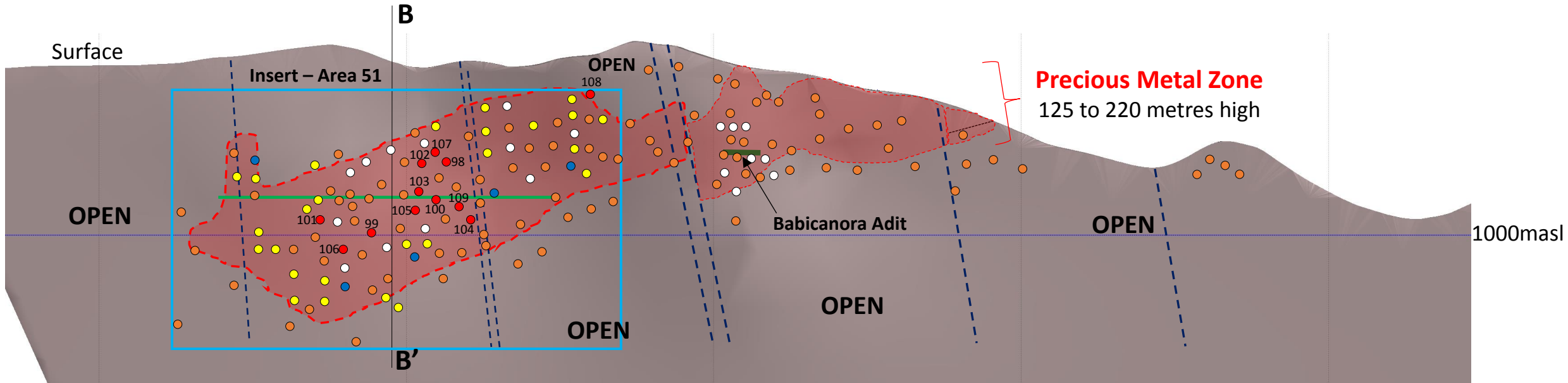


Long Section (Inclined) of Babicanora Vein Las Chispas Property, Looking Southwest

A'

A



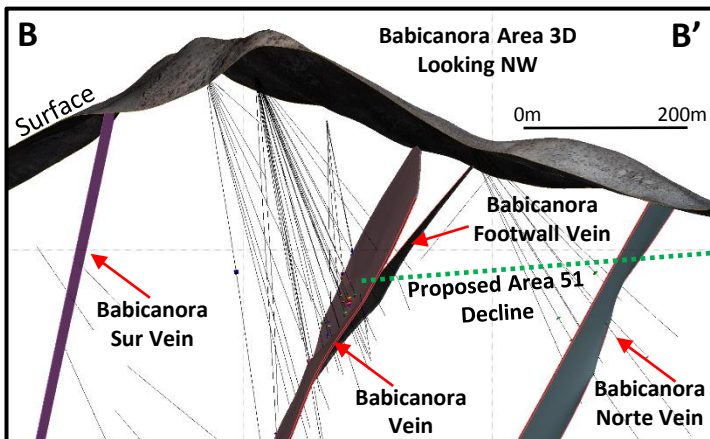
Est. 1,500m – Initially Drill-Tested for September 2018 Updated Resource



Legend

- Proposed U/G drift
- Current NR Reported DH
- Currently Drilling
- Proposed DH
- Assays Pending
- Completed DH Pierce pt.
- High-grade Footprint

*AgEq based on 75 (Ag):1 (Au) calculated using long-term silver and gold prices of US\$18.50 per ounce silver and US\$1,225 per ounce gold, with average metallurgical recoveries of 86.6% silver and 98.9% gold.



All information is approximate

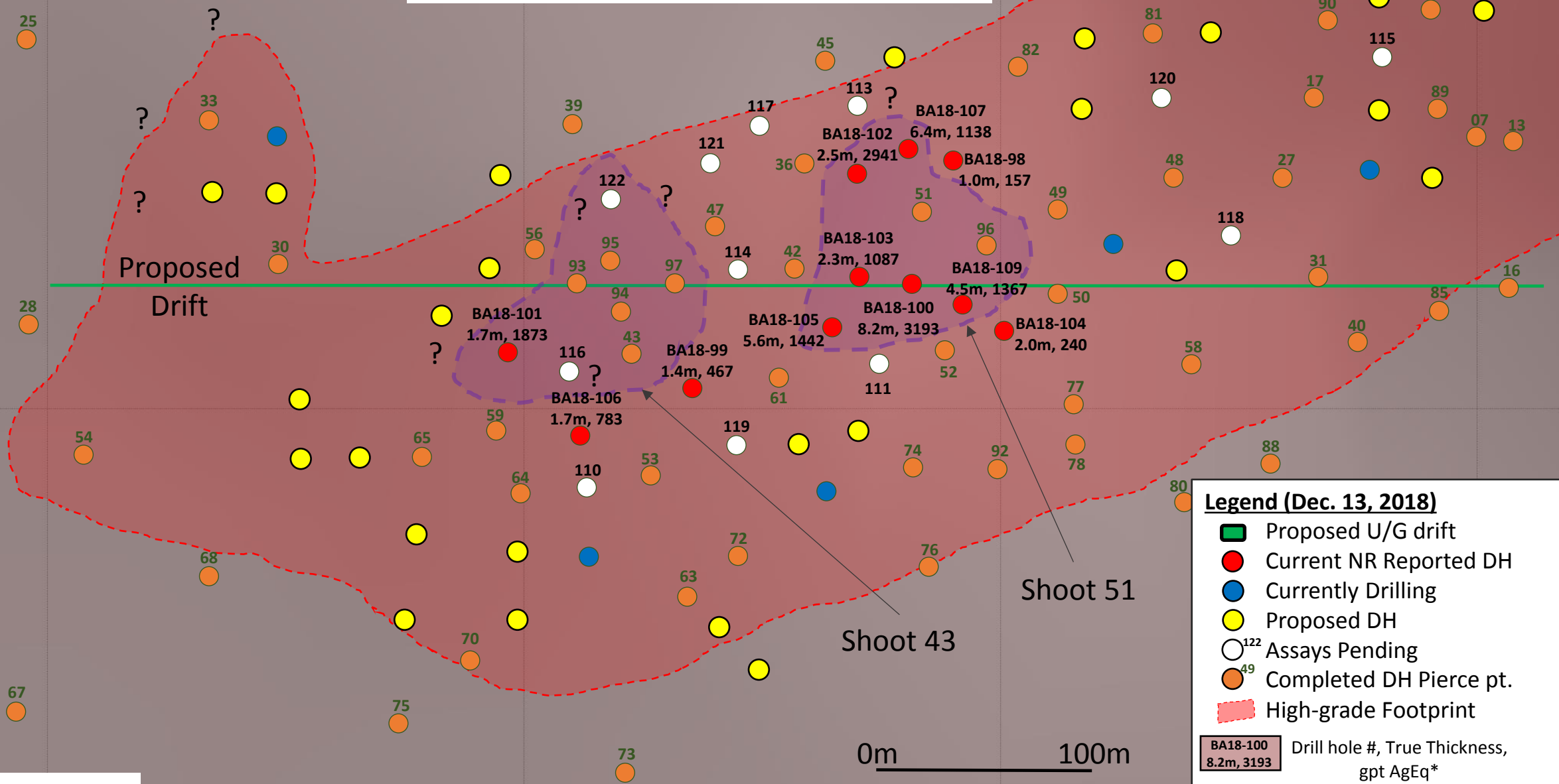


BA18-100: 8.2m @ 3193 gpt AgEq*



BA18-105: 5.6m @ 9.41 gpt Au and 736.5 gpt Ag, or 1442 gpt AgEq*

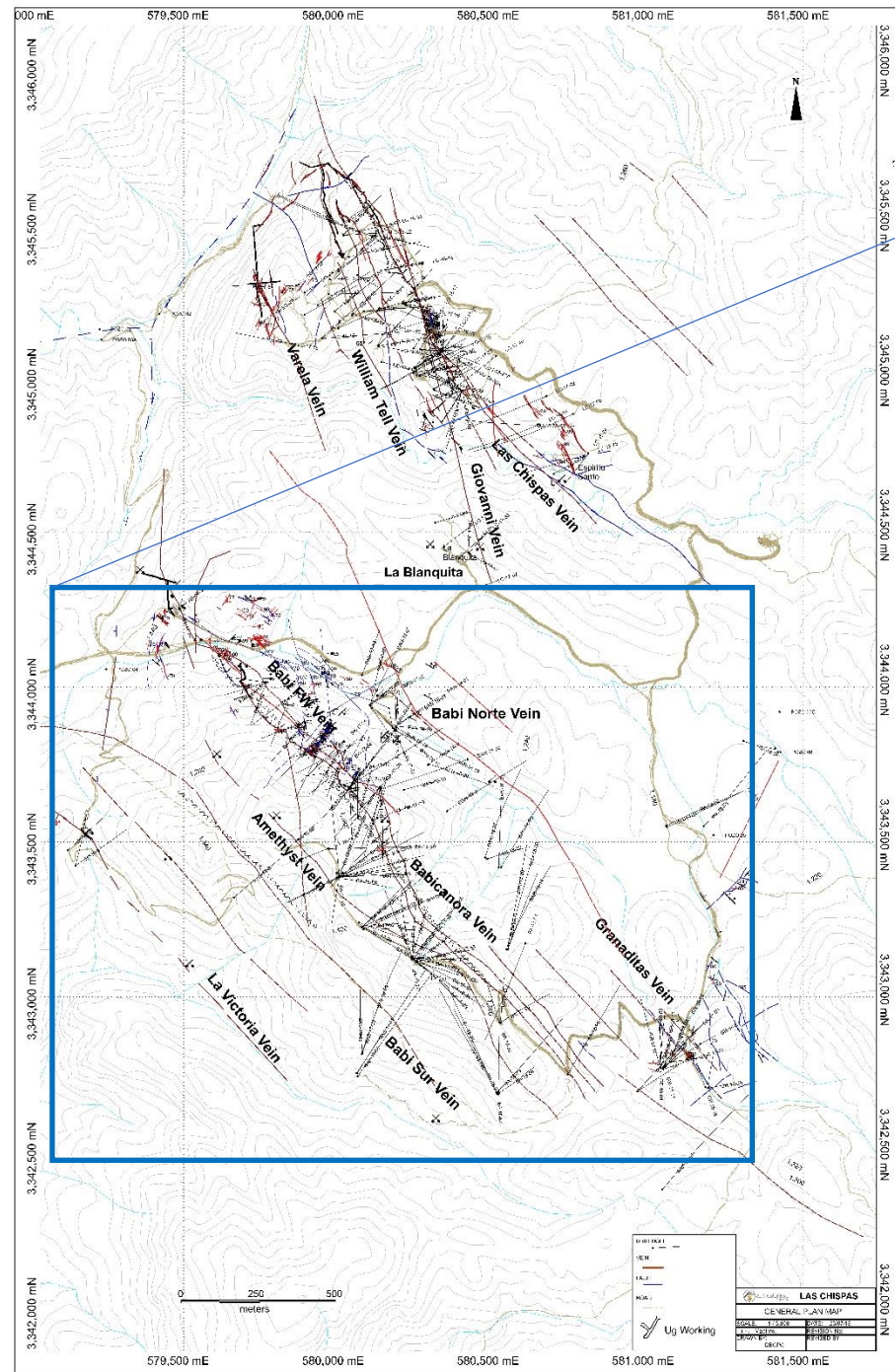
Long Section (Inclined) of Babicanora Vein Area 51, Looking Southwest (Insert)



Legend (Dec. 13, 2018)

- Proposed U/G drift
 - Current NR Reported DH
 - Currently Drilling
 - Proposed DH
 - Assays Pending
 - Completed DH Pierce pt.
 - High-grade Footprint
 - Multi-kilograms per tonne, mineralized shoot
- Drill hole #, True Thickness, gpt AgEq*

*AgEq based on 75 (Ag):1 (Au) calculated using long-term silver and gold prices of US\$18.50 per ounce silver and US\$1,225 per ounce gold, with average metallurgical recoveries of 86.6% silver and 98.9% gold.



Las Chispas District with Babicanora Plan Map, December 2018

